

Machine Tube Luminaire



RL70CE - 118

connected load
fitted with

work equipment
mains lead
luminaire body
material
weight (net)
fastening
light distribution
system of protection
class of protection
total length
light output
outside diameter

article no.

120V; 50/60Hz

1 x compact fluorescent lamp TC-L 18 W
neutral white 4000 K

electronic ballast
connecting terminal

borosilicate glass
approx. 1,8 kg (4.0 lbs)
lamp bracket (accessory)

direct

IP 67

I

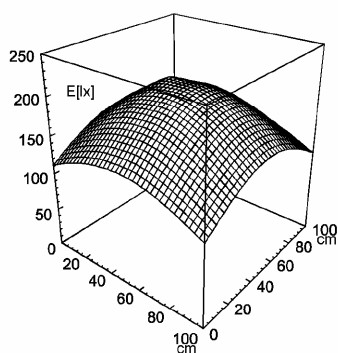
480 mm (18.9")

197 mm (7.8")

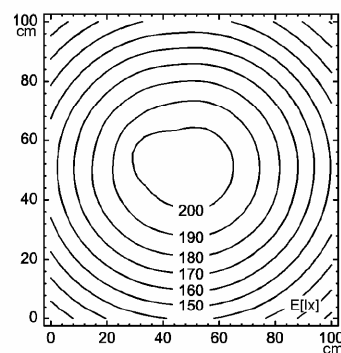
70 mm (2.8")

A with screwed cable gland (not shown)

041803015



E_{min}: 108 lx
E_m: 160 lx
E_{max}: 205 lx



measuring conditions: d=100cm

