



fitted with

- work equipment**
- connected load**
- power consumption**
- luminous flux**
- luminous efficacy**
- light distribution**
- color rendering index (CRI)**
- glare-free**
- system of protection**
- class of protection**
- usage**
- luminaire body**
- lamp cover**
- weight (net)**
- mains supply**

- design**
- fastening**
- accessory**
- special features**

- 1 x Light-emitting diode
- light colour neutral white
- without
- 20-28V; DC
- approx. 6 W
- approx. 400 lm
- approx. 67 lm/W
- direct
- > 80 (typ.85)
- prismatic screen
- IP 54
- III
- external
- aluminium, untreated, aluminium
- acrylic clear
- approx. 0.5 lb (0.2 kg)
- built-in plug
- QUICKON 3
- mounted version
- screws
- foil
- luminaire head can be turned in an angle of $\pm 90^\circ$



Intertek

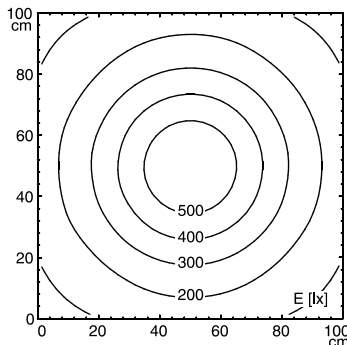


QUICKON 3

illuminance

Comment: d=50cm

Em: 261 lx
 Emax: 571 lx
 Emin: 83 lx



luminous intensity

