

Safety instructions



Danger!

Danger caused by wrong mounting or handling!

Wrong mounting or handling of this unit can result in serious injuries or death.

- First read these instructions and, where appropriate, any other instructions and information attached to the unit!
- Please observe the warnings and notes included in the instructions and attached to the unit!



Danger!

This symbol identifies items that may directly result in serious injuries or death in case of non-observance or wrong handling.



Warning!

This symbol identifies items that may result in serious injuries or death in case of non-observance or wrong handling.



Caution!

This symbol identifies items that may result in injuries or material damage in case of non-observance or wrong handling.



Note!

This symbol identifies items that are of importance for handling and operation.

Safety instructions



Danger!

Explosion hazard!

Operating the light in rooms subject to explosion hazards can trigger an explosion.



Caution!

Risk of corrosion!

Operating the light in moist rooms can result in damage to the light!


- Operate in dry rooms not subject to explosion hazards only!



Caution!

Damage caused by wrong operating unit!

An unsuitable operating unit can result in destroying the light.

- Operate the light with the operating units proposed by the manufacturer only.
- For lights of protection class II you should ensure  that their metal parts do not contact other metal parts which are connected to the protective earth conductor.



Caution!

Damage caused by wrong connection!

A wrong mains voltage or polarity can result in damaging or destroying the light.

- The connection must be carried out by a skilled electrician only!
- Before putting the light into operation, the user has to check whether the mains voltage is identical to the rated voltage specified on the rating plate!



The manufacturer cannot be held liable for damage caused by using the unit for purposes contrary to the designated use or by ignoring safety instructions and warnings.

General



Designated use:

Intended purpose:

Task light - task lights are lights intended to illuminate a single workstation and are used in addition to general lighting equipment.

Place of use:

Exclusively for dry rooms not subject to explosion hazards.

Operating mode:

The light is designed for continuous operation.

Abbreviations and symbols



Safety information!



Important information!



Unit corresponds to international protection class II (all-insulated)



Observe the disposal instructions!



The light is suitable for mounting on normally inflammable surfaces

LED light-emitting diode



VDE approval



ENEC approval



SEV approval



CE
Conformity mark



The manufacturer cannot be held liable for damage caused by using the unit for purposes contrary to the designated use or by ignoring safety instructions and warnings.

Mounting

Fig. 12

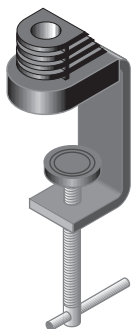
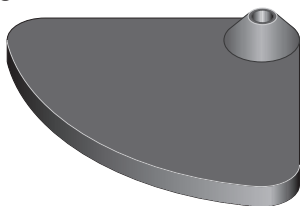


Fig. 13



General

The light has been designed as mobile light.



Caution!

Risk caused by a falling light.

If not fastened properly, the light may tilt or fall down.

- Mount light, using suitable aids, at the selected mounting surface such that falling down is prevented.
- Lay cable in such a way that it cannot become damaged!
- When using mounting elements which have not been proposed by the manufacturer, the user has to verify their reliability!

Fastening elements

As a standard feature, the light is delivered with a desk clamp (see Fig. 12).

Other suitable fastening elements such as a desk stand (see Fig. 13) or other adapter units must be purchased from the manufacturer.

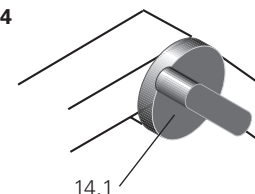
Positioning

For information on the correct installation and adjustment of the light, please refer to illustrations 3.1 to 3.4 on page 3.

Adjusting the articulation joints

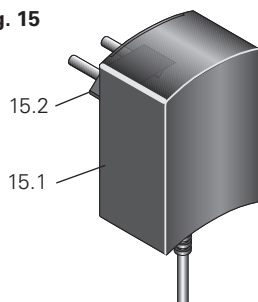
The joints are adjustable. Each joint must be adjusted such that the light is - on the one hand - easily movable and - on the other hand - remains in the position desired by the user.

Fig. 14



Connection

Fig. 15



Caution!

Damage caused by wrong connection!

An unsuitable operating unit or a wrong connection can result in destroying the light.

- Operate the light with the operating units delivered by the manufacturer only.
- Before putting the light into operation, the user has to check whether the mains voltage is identical with the rated voltage and frequency specified on the rating plate.

Operating unit

As a standard feature, the light is delivered with plug-in power supply unit (see Fig. 15).

The plug-in power supply unit can be connected to any earthed or Euro socket.

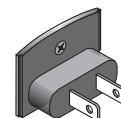
To adapt it to the existing connector system e. g. for use in the US), the plug-in unit [15.2] can be exchanged.



Note for **USA**

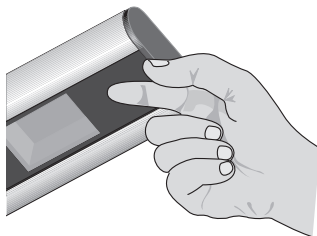
The installed plug-in power supply unit can also be used in the US. To do so, the plug-in unit containing the round plug-in pins must be replaced with the plug-in unit containing the flat plug-in pins included in the US version (Fig. 16).

Fig. 16



Operation

Fig. 21



TouchLED sensor

The light is equipped with a TouchLED sensor for switching on and off and for dimming.

In addition, further functions can be loaded and set at the sensor.

The sensor [2.3] is located at the underside of the light head [2.1].



Note!

The TouchLED sensor uses its own light source for detecting a touch. As a by-product, this light source can be used as night light or as display for a parameter setting (e. g. brightness value of the sensor LED).

When connected to power, the sensor is calibrated by means of its internal LED.

After that, the sensor can be used for switching, dimming and parameterising.

Switching on

Touch the sensor for a brief moment -> the light will be switched on (switch-on value is the last dim value).

Switching off

Touch the sensor again for a brief moment -> the light will be switched off.

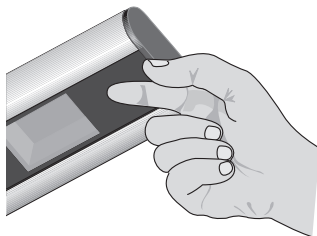
Dimming

Touch the sensor until the desired brightness is obtained.

Note: To reverse the dimming direction, briefly interrupt touching the sensor

Extended functions

Fig. 21



External switching

This function can be used during a power failure or when using a switched socket.

If the light was off at the time of the power switch-off, it will also remain off upon return of power.

If the light was on at the time of the power switch-off, it will be switched on upon return of power (switch-on value is the last dim value).

Auto Off

This function is used for saving energy and increasing the service life of the LED.

When the light has been on uninterruptedly for 14 hours, it will be automatically switched off.

Night Light

This function is suitable for additional use of the Sensor LED as night light.

The brightness of the sensor LED can be changed as follows:

- Touch the sensor once or several times for at least 10 seconds.

The sensor LED will show one of the following displays:

when it flashes briefly

5 times = Sensor LED 100%

when it flashes briefly

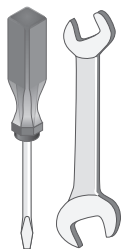
3 times = Sensor LED 40%

when it flashes twice for

a long period = Sensor LED 10%

If it is bright enough, the sensor LED will switch to the minimum value.

Maintenance and repair



General

The light is maintenance-free.

Repairs must be carried out by the manufacturer only!



Warning!

Danger due to electrical shock upon contact!

Maintenance or repair work carried out incorrectly may result in serious injuries or death.

- Maintenance and repair work to be carried out exclusively by the manufacturer!
- Disconnect the light from the mains before carrying out any maintenance or repair work!
- Only parts released by the manufacturer may be used as spare parts!

Defective light source



The light is equipped with light-emitting diodes (LEDs). The useful life of LEDs exceeds by far that of conventional lamps (e.g. light bulbs). Therefore, a light source replacement is rarely necessary.

If nevertheless the LED should break down, the entire LED module must be replaced.

Care



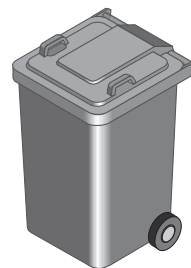
Note!

Risk of damage through wrong care!

Wrong care may destroy the unit.

- Clean the transparent cover at regular intervals!
- Clean the light parts with a cloth impregnated with a suitable household cleaning agent only!
- Make sure the agents used are compatible with paints and plastics! Do not use concentrated disinfectants or solvents or alcoholic liquids.

Disposal



Note!

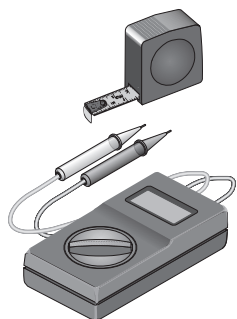
Environmental hazard!

Wrong disposal endangers our environment.

- Return the unit at the end of its useful life to the available recycling systems!



Technical data



General data

Classification:
- Protection class II
- Protection type IP20
- not suitable for rooms
subject to explosion hazards

Operating mode:
Continuous operation

Technical safety check:
according to EN 60 598-1

Dimensions

Light body
approx. 154 x 59 x 21 mm
Column approx. 230 + 531 mm

Electrical values

Rated voltage 100-240 V AC
Frequency range 50/60 Hz
Power consumption approx. 8 W



Caution!

Risk of damage due to differences from the standard design.

If required, this series of units will be supplemented by further variants. The technical data may therefore be subject to modifications.

- Always observe the data and symbols given on the rating plate!