

NEW

Screw terminal with cap

NEW

Terminal element CAGE CLAMP® Technologie with cap

- Bayonet locking mechanism enables quick and easy assembly of the signal tower
- The ideal solution for every installation

**TECHNICAL SPECIFICATIONS:****Terminal element****Dimensions** (Ø x Height):

52 mm x 65 mm

Material:

Terminal element: PA + PC/ABS

Cap: PC

Fixing:

Tube mounting, for tube Ø 25 mm

Single hole mounting, Base and bracket mounting (accessory)

Connection:Screw terminal max. 1.5 mm²**Cable entry:**

Cable diameter max. 9.5 mm

Terminal element with CAGE CLAMP® technology**Dimensions** (Ø x Height):

52 mm x 65 mm

Material:

Terminal element: PA + PC/ABS

Cap: PC

Fixing:

Tube mounting, for tube Ø 25 mm

Base mounting, Single hole mounting and bracket mounting (accessory)

Connection:CAGE CLAMP® technology max. 1.5 mm²**Cable entry:**

Cable diameter max. 9.5 mm

**ORDER SPECIFICATIONS TERMINAL ELEMENTS:****Terminal element****845 000 00**

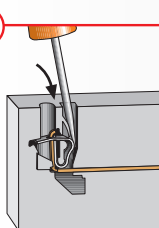
incl. cap, rubber seal and nut

Terminal element with CAGE CLAMP® **845 010 00**

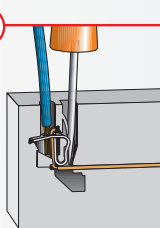
incl. cap, rubber seal and nut

**ADDITIONAL INFORMATION:**

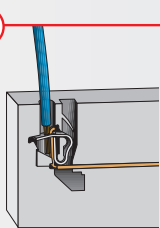
Terminal elements with CAGE CLAMP® technology enable leads to be quickly and easily wired, guaranteeing a secure and reliable contact.

1

Insert screwdriver at a slight angle into opening as far as possible.

2

Open spring-loaded clamp with the help of the screwdriver and insert wire as far as possible.

3

Remove screwdriver - the wire is firmly clamped.

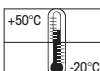
CAGE CLAMP® is a registered trademark of WAGO Kontakttechnik GmbH.

**ACCESSORIES:**

Suitable accessories can be found on page 67.

**TECHNICAL DIAGRAMS: see page 320**

See note
on page 347



WERMA
SIGNALTECHNIK

