



WA244808WF

### Industry Standards

UL 508, Type 12  
CSA Certified, Type 12  
NEMA/EEMAC Type 12  
JIC EL-1-71

 UL Files E64791

 CSA File LL66078

## FEATURES-SPECIFICATIONS

### Applications

Intended for use in housing electrical and electronic controls, instruments, components, and associated wiring, these enclosures incorporate double-hinged doors which provide convenient access. Designed for indoor use in protecting components from dust, dirt, oil, and water.

### Construction

- Bodies and doors fabricated from 14 gauge steel
- Continuously welded seams ground smooth, less knockouts or holes
- Body stiffeners are added in larger enclosures for extra rigidity
- Rolled lip around all side of enclosure opening is provided to exclude liquids and contaminants
- Special overlapping door design eliminates need for center post
- 3-point latching mechanism operates with an oil-tight locking handle
- Doors are removable by pulling heavy gauge continuous hinge pin
- Doors are sealed with closed cell neoprene gasket
- Collar studs are provided for mounting **optional** sub panels
- External mounting feet are provided for mounting

- Grounding provisions provided
- Print pocket is provided

### Finish

- ANSI-61 gray polyester powder inside and out over phosphatized surfaces
- **Optional** back panels are painted white polyester powder over phosphatized surfaces

### Accessories

- Panels (reference tables)
- See pages J1- J19

WA-WF SERIES TWO DOOR ENCLOSURES								
CATALOG NUMBER	BODY/DOOR STEEL GAUGE	ENCLOSURE SIZE H X W X D	BACK PANEL CATALOG NUMBER*	BACK PANEL STEEL GAUGE	BACK PANEL SIZE A X B	C	STIFFENER	
							DOOR	BODY
WA244208WF ◀	14/14	24.00x42.00x8.00 (610x1067x203)	NP4224	12	39.00x21.00 (991x533)	1.50 (38)	NO	NO
WA244808WF	14/14	24.00x48.00x8.00 (610x1219x203)	NP4824	12	21.00x45.00 (533x1143)	1.50 (38)	NO	NO
WA304210WF	14/14	30.00x42.00x10.00 (762x1067x254)	NP4230	12	27.00x39.00 (686x991)	1.50 (38)	NO	YES
WA304810WF ◀	14/14	30.00x48.00x10.00 (762x1219x254)	NP4830	12	45.00x27.00 (1143x686)	1.50 (38)	NO	YES
WA306010WF	14/14	30.00x60.00x10.00 (762x1524x254)	NP6030	12	27.00x57.00 (686x1448)	1.50 (38)	NO	YES
WA364212WF	14/14	36.00x42.00x12.00 (914x1067x305)	NP4236	12	33.00x39.00 (838x991)	1.50 (38)	NO	YES
WA364812WF	14/14	36.00x48.00x12.00 (914x1219x305)	NP4836	12	33.00x45.00 (838x1143)	1.50 (38)	NO	YES
WA366012WF	14/14	36.00x60.00x12.00 (914x1524x305)	NP6036	12	33.00x57.00 (838x1448)	1.50 (38)	NO	YES
WA424212WF	14/14	42.00x42.00x12.00 (1067x1067x305)	NPDD4242	12	39.00x39.00 (991x991)	1.50 (38)	NO	YES
WA424812WF	14/14	42.00x48.00x12.00 (1067x1219x305)	NPDD4842	12	39.00x45.00 (991x1143)	1.50 (38)	NO	YES
WA426012WF	14/14	42.00x60.00x12.00 (1067x1524x305)	NPDD4260	12	38.00x56.00 (965x1422)	2.00 (51)	YES	YES
WA484812WF	14/14	48.00x48.00x12.00 (1219x1219x305)	NPDD4848	12	44.00x44.00 (1118x1118)	2.00 (51)	NO	YES

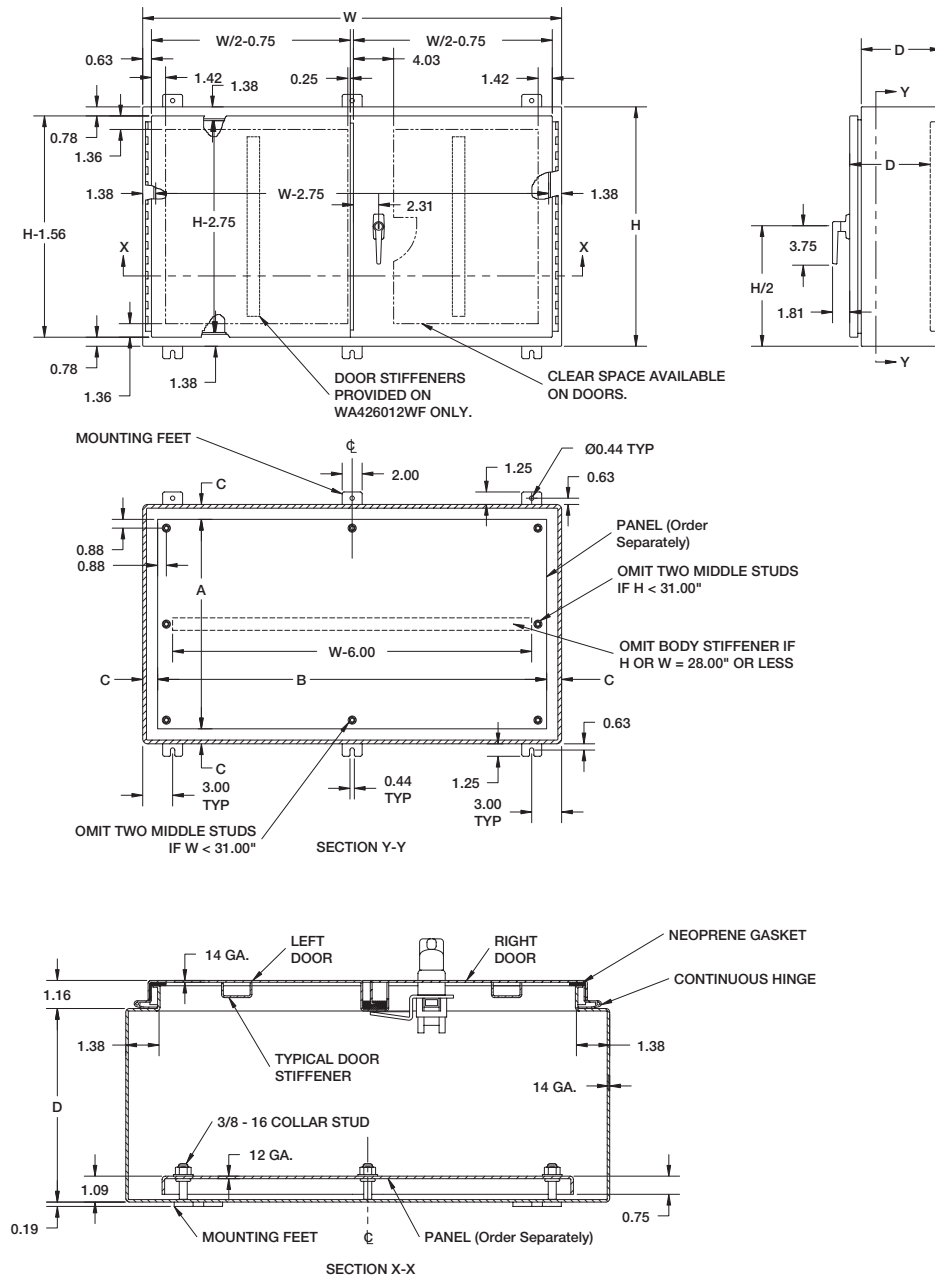


**WIEGMANN**

◀ NEW PRODUCT IN 2003

\*Back panels must be ordered separately.

DATA SUBJECT TO CHANGE WITHOUT NOTICE



**NP SERIES BACK PANELS  
ACCESSORY PANELS FOR NEMA 1, 3R, 12, 4 & 4X WALL-MOUNTS**

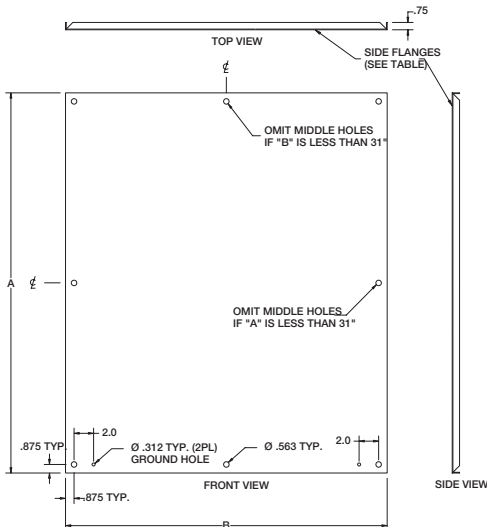


NP1212

**FEATURES-SPECIFICATIONS**

**Description**

- Steel and stainless panels are 12 gauge
  - Aluminum panels are 5052-H32 aluminum alloy, .080-inch thick
  - Panel with any side over 17.00" has 3/4" flange on all sides
  - Steel panels are painted white polyester powder
  - Panels fit the following enclosures:
    - NEMA 1, Large (NIC)
    - NEMA 3R, Hinge Cover (RHC, Large)
    - NEMA 4, 412, & 4X Single Door (N12, N4, N412, SSN4)
    - NEMA 12 2-Door Wall-Mount, (WAWF), Single Door
- Right Flange Disconnect (SDN12, ABN12)  
Large JIC (B-CH, Large) Single door N12



BACK PANELS FOR NEMA 1, 3R, 12, 4 & 4X WALL-MOUNT ENCLOSURES			
PAINTED STEEL (WHITE)	CATALOG NUMBER		PANEL SIZE A X B
	316 STAINLESS STEEL	ALUMINUM	
NP1212	—	—	9.00X9.00 (229X229)
NP1224	—	—	9.00X21.00 (229X533)
NP1612	NP1612SSA	ALNP1612	13.00X9.00 (330X229)
NP1616	NP1616SSA	ALNP1616	13.00X13.00 (330X330)
NP1620	—	—	17.00X13.00 (432X330)
NP2012	—	—	17.00X9.00 (432X229)
NP2016	NP2016SSA	ALNP2016	17.00X13.00 (432X330)
NP2024	—	—	21.00X17.00 (533X432)
NP2020	NP2020SSA	ALNP2020	17.00X17.00 (432X432)
NP2412	—	—	21.00X9.00 (533X229)
NP2416	NP2416SSA	—	21.00X13.00 (533X330)
NP2420	NP2420SSA	ALNP2420	21.00X17.00 (533X432)
NP2424	NP2424SSA	ALNP2424	21.00X21.00 (533X533)
NP2430	—	—	27.00X21.00 (686X533)
NP3016	—	—	27.00X13.00 (686X330)
NP3020	NP3020SSA	—	27.00X17.00 (686X432)
NP3024	NP3024SSA	ALNP3024	27.00X21.00 (686X533)
NP3030	NP3030SSA	—	27.00X27.00 (686X686)
NP3036	—	—	33.00X27.00 (838X686)
NP3042	—	—	39.00X27.00 (991X686)
NP3624	NP3624SSA	ALNP3624	33.00X21.00 (838X533)
NP3630	NP3630SSA	ALNP3630	33.00X27.00 (838X686)
NP3636	NP3636SSA	—	33.00X33.00 (838X838)
NP3642	—	—	39.00X33.00 (991X838)
NP4024	—	—	37.00X21.00 (940X533)
NP4224	—	—	39.00X21.00 (991X533)
NP4230	NP4230SSA	—	39.00X27.00 (991X686)
NP4236	NP4236SSA	—	39.00X33.00 (991X838)
NP4824	—	—	45.00X21.00 (1143X533)
NP4830	—	—	45.00X27.00 (1143X686)
NP4836	NP4836SSA	ALNP4836	45.00X33.00 (1143X838)
NP6030	—	—	57.00X27.00 (1448X686)
NP6036	NP6036SSA	ALNP6036	57.00X33.00 (1448X838)
NP7230	—	—	69.00X27.00 (1753X686)
NP7236	—	—	69.00X33.00 (1753X838)



NPDD4242

**FEATURES-SPECIFICATIONS**

**Description**

- Steel panels are fabricated from 10 gauge carbon steel
- Panels are painted with a white polyester powder
- Panels are used in NEMA 12 double door floor-mounted enclosures and some 2-door wall-mount enclosures

BACK PANELS FOR DOUBLE DOOR FLOOR-MOUNTED ENCLOSURES	
CATALOG NUMBER PAINTED STEEL (WHITE)	PANEL SIZE A X B
NPDD4242	39.00x39.00 (991x991)
NPDD4260	38.00x56.00 (965x1422)
NPDD4842	45.00x39.00 (1143x991)
NPDD4848	44.00x44.00 (1118x1118)
NPDD5442	50.00x38.00 (1270x965)
NPDD6048	44.00x56.00 (1118x1422)
NPDD6060	56.00x56.00 (1422x1422)
NPDD7260	56.00x68.00 (1422x1727)
NPDD7272	68.00x68.00 (1727x1727)

