

# Pluggable PCB terminals series 8113 / 8213, rising cage clamp

pitch 5.00 / 5.08 mm

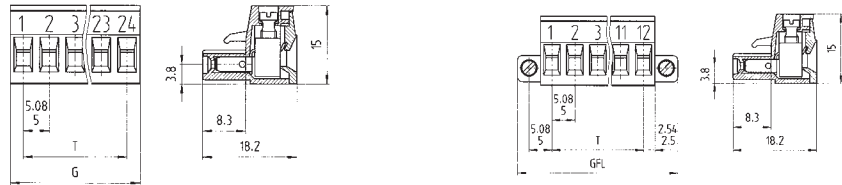
IEC	250 V 4kV cat.3 400 V 4kV cat.2 1000 V 4kV cat.1	12 A	0.14 - 2.5 mm <sup>2</sup> (Stranded) 0.14 - 2.5 mm <sup>2</sup> (Solid)
UL	300 V	15 A	22 - 12 AWG
CSA	300 V	15 A	22 - 12 AWG

Wire Strip Length 6.0 mm  
Screw Size M3



See Technical Data section for screw material options

Approvals:



## series 8113 B / F OB pitch 5.00 mm

Box Qty	G	T	Pole	unmarked		unmarked with screw flange	
				Part Number	Part Number	Part Number	Part Number
100	10	5	2	25.320.3253.0	25.320.0253.0	25.322.3253.0	25.322.0253.0
100	15	10	3	25.320.3353.0	25.320.0353.0	25.322.3353.0	25.322.0353.0
50	20	15	4	25.320.3453.0	25.320.0453.0	25.322.3453.0	25.322.0453.0
50	25	20	5	25.320.3553.0	25.320.0553.0	25.322.3553.0	25.322.0553.0
50	30	25	6	25.320.3653.0	25.320.0653.0	25.322.3653.0	25.322.0653.0
50	35	30	7	25.320.3753.0	25.320.0753.0	25.322.3753.0	25.322.0753.0
50	40	35	8	25.320.3853.0	25.320.0853.0	25.322.3853.0	25.322.0853.0
50	45	40	9	25.320.3953.0	25.320.0953.0	25.322.3953.0	25.322.0953.0
50	50	45	10	25.320.4053.0	25.320.1053.0	25.322.4053.0	25.322.1053.0
50	55	50	11	25.320.4153.0	25.320.1153.0	25.322.4153.0	25.322.1153.0
50	60	55	12	25.320.4253.0	25.320.1253.0	25.322.4253.0	25.322.1253.0
50	65	60	13	25.320.4353.0	25.320.1353.0	25.322.4353.0	25.322.1353.0
50	70	65	14	25.320.4453.0	25.320.1453.0	25.322.4453.0	25.322.1453.0
50	75	70	15	25.320.4553.0	25.320.1553.0	25.322.4553.0	25.322.1553.0
50	80	75	16	25.320.4653.0	25.320.1653.0	25.322.4653.0	25.322.1653.0

## series 8213 B / F OB pitch 5.08 mm

Box Qty	G	T	Pole	unmarked		unmarked with screw flange	
				Part Number	Part Number	Part Number	Part Number
100	10.16	5.08	2	25.340.3253.0	25.340.0253.0	25.323.3253.0	25.323.0253.0
100	15.24	10.16	3	25.340.3353.0	25.340.0353.0	25.323.3353.0	25.323.0353.0
50	20.32	15.24	4	25.340.3453.0	25.340.0453.0	25.323.3453.0	25.323.0453.0
50	25.40	20.32	5	25.340.3553.0	25.340.0553.0	25.323.3553.0	25.323.0553.0
50	30.48	25.40	6	25.340.3653.0	25.340.0653.0	25.323.3653.0	25.323.0653.0
50	35.56	30.48	7	25.340.3753.0	25.340.0753.0	25.323.3753.0	25.323.0753.0
50	40.64	35.56	8	25.340.3853.0	25.340.0853.0	25.323.3853.0	25.323.0853.0
50	45.72	40.64	9	25.340.3953.0	25.340.0953.0	25.323.3953.0	25.323.0953.0
50	50.80	45.72	10	25.340.4053.0	25.340.1053.0	25.323.4053.0	25.323.1053.0
50	55.88	50.80	11	25.340.4153.0	25.340.1153.0	25.323.4153.0	25.323.1153.0
50	60.96	55.88	12	25.340.4253.0	25.340.1253.0	25.323.4253.0	25.323.1253.0
50	66.04	60.96	13	25.340.4353.0	25.340.1353.0	25.323.4353.0	25.323.1353.0
50	71.12	66.04	14	25.340.4453.0	25.340.1453.0	25.323.4453.0	25.323.1453.0
50	76.20	71.12	15	25.340.4553.0	25.340.1553.0	25.323.4553.0	25.323.1553.0
50	81.28	76.20	16	25.340.4653.0	25.340.1653.0	25.323.4653.0	25.323.1653.0

Custom Marking Available  
More poles available on request

# Pluggable PCB terminals series 8113 / 8213, rising cage clamp system

pitch 5.00 / 5.08 mm

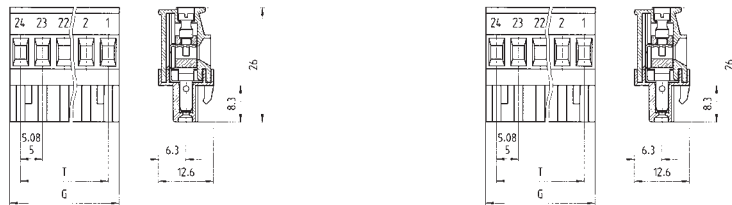
IEC	250 V 4kV cat.3 400 V 4kV cat.2 1000 V 4kV cat.1	12 A	0.14 - 2.5 mm <sup>2</sup> (Stranded) 0.14 - 2.5 mm <sup>2</sup> (Solid)
UL	300 V	15 A	22 - 12 AWG
CSA	300 V	15 A	22 - 12 AWG

Wire Strip Length 6.0 mm  
Screw Size M3



See Technical Data section for screw material options

Approvals:



## series 8113 B VR / F pitch 5.00 mm

Box Qty	G	T	Pole	unmarked		marked	
				Part Number	Part Number	Part Number	Part Number
100	10	5	2	25.325.3253.0	25.325.0253.0		
100	15	10	3	25.325.3353.0	25.325.0353.0		
50	20	15	4	25.325.3453.0	25.325.0453.0		
50	25	20	5	25.325.3553.0	25.325.0553.0		
50	30	25	6	25.325.3653.0	25.325.0653.0		
50	35	30	7	25.325.3753.0	25.325.0753.0		
50	40	35	8	25.325.3853.0	25.325.0853.0		
50	45	40	9	25.325.3953.0	25.325.0953.0		
50	50	45	10	25.325.4053.0	25.325.1053.0		
50	55	50	11	25.325.4153.0	25.325.1153.0		
50	60	55	12	25.325.4253.0	25.325.1253.0		
50	65	60	13	25.325.4353.0	25.325.1353.0		
50	70	65	14	25.325.4453.0	25.325.1453.0		
50	75	70	15	25.325.4553.0	25.325.1553.0		
50	80	75	16	25.325.4653.0	25.325.1653.0		

## series 8213 B VR / F pitch 5.08 mm

Box Qty	G	T	Pole	unmarked		unmarked with screw flange		marked with screw flange	
				Part Number	Part Number	Part Number	Part Number	Part Number	Part Number
100	10.16	5.08	2	25.345.3253.0	25.345.0253.0	25.344.3253.0		25.344.0253.0	
100	15.24	10.16	3	25.345.3353.0	25.345.0353.0	25.344.3353.0		25.344.0353.0	
50	20.32	15.24	4	25.345.3453.0	25.345.0453.0	25.344.3453.0		25.344.0453.0	
50	25.40	20.32	5	25.345.3553.0	25.345.0553.0	25.344.3553.0		25.344.0553.0	
50	30.48	25.40	6	25.345.3653.0	25.345.0653.0	25.344.3653.0		25.344.0653.0	
50	35.56	30.48	7	25.345.3753.0	25.345.0753.0	25.344.3753.0		25.344.0753.0	
50	40.64	35.56	8	25.345.3853.0	25.345.0853.0	25.344.3853.0		25.344.0853.0	
50	45.72	40.64	9	25.345.3953.0	25.345.0953.0	25.344.3953.0		25.344.0953.0	
50	50.80	45.72	10	25.345.4053.0	25.345.1053.0	25.344.4053.0		25.344.1053.0	
50	55.88	50.80	11	25.345.4153.0	25.345.1153.0	25.344.4153.0		25.344.1153.0	
50	60.96	55.88	12	25.345.4253.0	25.345.1253.0	25.344.4253.0		25.344.1253.0	
50	66.04	60.96	13	25.345.4353.0	25.345.1353.0	25.344.4353.0		25.344.1353.0	
50	71.12	66.04	14	25.345.4453.0	25.345.1453.0	25.344.4453.0		25.344.1453.0	
50	76.20	71.12	15	25.345.4553.0	25.345.1553.0	25.344.4553.0		25.344.1553.0	
50	81.28	76.20	16	25.345.4653.0	25.345.1653.0	25.344.4653.0		25.344.1653.0	

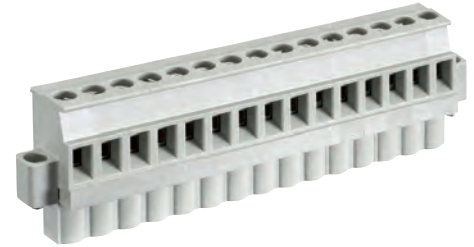
Custom Marking Available  
More poles available on request

# Pluggable PCB terminals series 8113 / 8213, rising cage clamp system

pitch 5.00 / 5.08 mm

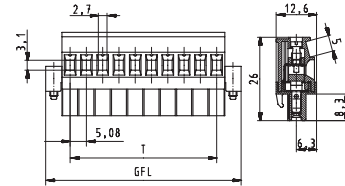
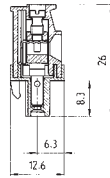
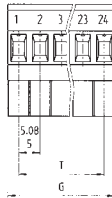
IEC	250 V 4kV cat.3 400 V 4kV cat.2 1000 V 4kV cat.1	12 A	0.14 - 2.5 mm <sup>2</sup> (Stranded) 0.14 - 2.5 mm <sup>2</sup> (Solid)
UL	300 V	15 A	22 - 12 AWG
CSA	300 V	15 A	22 - 12 AWG

Wire Strip Length 6.0 mm  
Screw Size M3



See Technical Data section for screw material options

Approvals:



## series 8113 B VL / F pitch 5.00 mm

Box Qty	G	T	Pole
100	10	5	2
100	15	10	3
50	20	15	4
50	25	20	5
50	30	25	6
50	35	30	7
50	40	35	8
50	45	40	9
50	50	45	10
50	55	50	11
50	60	55	12
50	65	60	13
50	70	65	14
50	75	70	15
50	80	75	16

unmarked

marked

Part Number	Part Number	Part Number	Part Number
25.326.3253.0	25.326.0253.0		
25.326.3353.0	25.326.0353.0		
25.326.3453.0	25.326.0453.0		
25.326.3553.0	25.326.0553.0		
25.326.3653.0	25.326.0653.0		
25.326.3753.0	25.326.0753.0		
25.326.3853.0	25.326.0853.0		
25.326.3953.0	25.326.0953.0		
25.326.4053.0	25.326.1053.0		
25.326.4153.0	25.326.1153.0		
25.326.4253.0	25.326.1253.0		
25.326.4353.0	25.326.1353.0		
25.326.4453.0	25.326.1453.0		
25.326.4553.0	25.326.1553.0		
25.326.4653.0	25.326.1653.0		

## series 8213 B VL / F pitch 5.08 mm

Box Qty	G	T	Pole
100	10.16	5.08	2
100	15.24	10.16	3
50	20.32	15.24	4
50	25.40	20.32	5
50	30.48	25.40	6
50	35.56	30.48	7
50	40.64	35.56	8
50	45.72	40.64	9
50	50.80	45.72	10
50	55.88	50.80	11
50	60.96	55.88	12
50	66.04	60.96	13
50	71.12	66.04	14
50	76.20	71.12	15
50	81.28	76.20	16

unmarked

marked

unmarked  
with screw flange

marked  
with screw flange

Part Number	Part Number	Part Number	Part Number
25.346.3253.0	25.346.0253.0	25.349.3253.0	25.349.0253.0
25.346.3353.0	25.346.0353.0	25.349.3353.0	25.349.0353.0
25.346.3453.0	25.346.0453.0	25.349.3453.0	25.349.0453.0
25.346.3553.0	25.346.0553.0	25.349.3553.0	25.349.0553.0
25.346.3653.0	25.346.0653.0	25.349.3653.0	25.349.0653.0
25.346.3753.0	25.346.0753.0	25.349.3753.0	25.349.0753.0
25.346.3853.0	25.346.0853.0	25.349.3853.0	25.349.0853.0
25.346.3953.0	25.346.0953.0	25.349.3953.0	25.349.0953.0
25.346.4053.0	25.346.1053.0	25.349.4053.0	25.349.1053.0
25.346.4153.0	25.346.1153.0	25.349.4153.0	25.349.1153.0
25.346.4253.0	25.346.1253.0	25.349.4253.0	25.349.1253.0
25.346.4353.0	25.346.1353.0	25.349.4353.0	25.349.1353.0
25.346.4453.0	25.346.1453.0	25.349.4453.0	25.349.1453.0
25.346.4553.0	25.346.1553.0	25.349.4553.0	25.349.1553.0
25.346.4653.0	25.346.1653.0	25.349.4653.0	25.349.1653.0