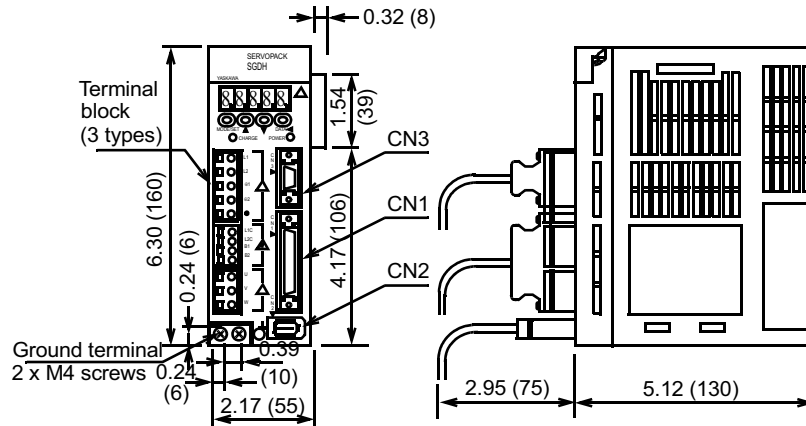


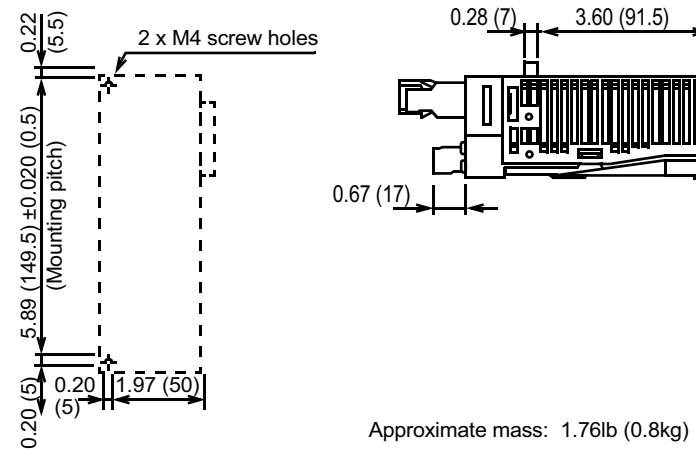
Dimensions in inches (mm)

SGDH Servo Amplifier (Standard)

- SGDH-A3AE to -02AE (200V Single-phase, 30 to 200W) and
- SGDH-A3BE to -01BE (100V Single-phase, 30 to 100W)



Mounting Hole Diagram



Approximate mass: 1.76lb (0.8kg)

Connectors on the amplifier (supplied):

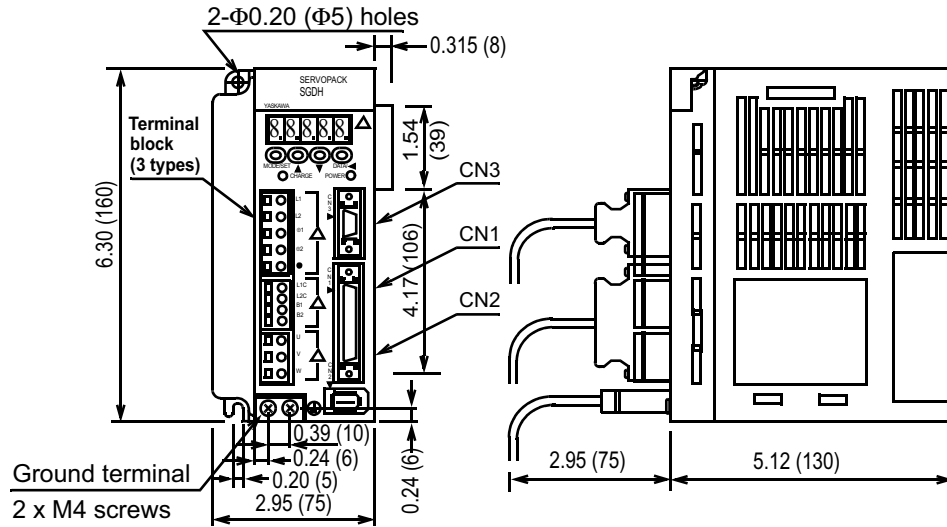
Connector Symbol	Servo Amplifier Receptacle	Manufacturer
CN1	10250-52A2JL	3M Company
CN2	53460-0611	Molex Co.
CN3	10214-52A2JL	3M Company

User needs to obtain the following:

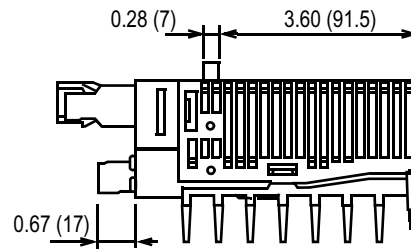
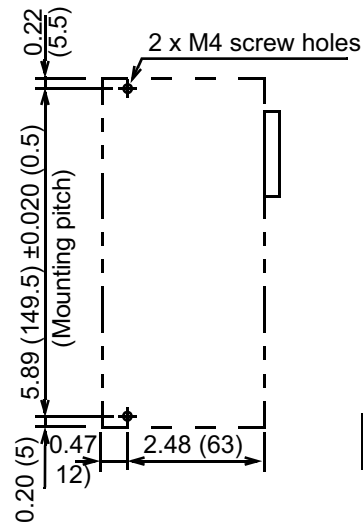
Connector Symbol	Mating Connector	Manufacturer
1CN	10150-3000VE connector 10350-52A0-008 case	3M Company
2CN	55100-0600	Molex Co.
3CN	JEZ-9S connector J-C9-2C case	JST Company

100/200V Sigma II Servo System

- SGDH-04AE (200V Single-phase, 400W) and
- SGDH-02BE (100V Single-phase, 200W) and
- SGDH-04FE (100V Single-phase, 400W)



Mounting Hole Diagram

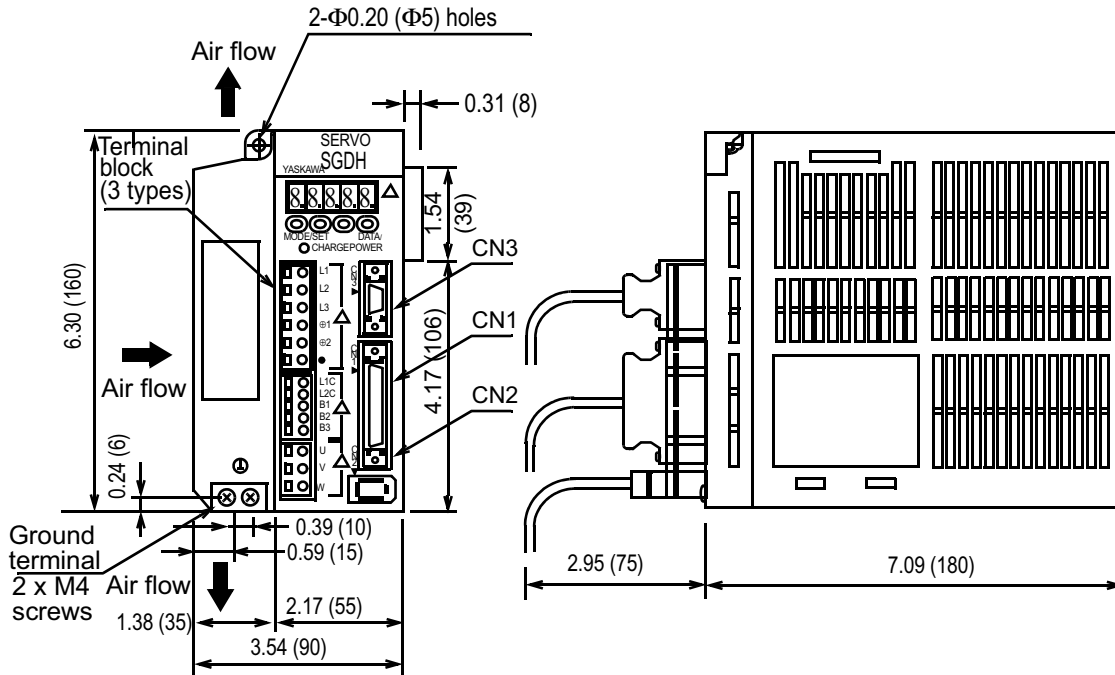


Mating connectors: [See page 99](#)

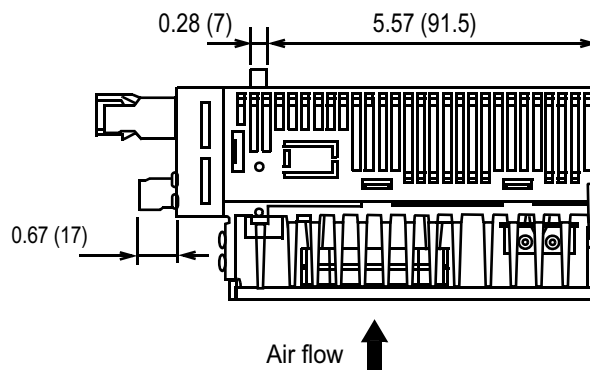
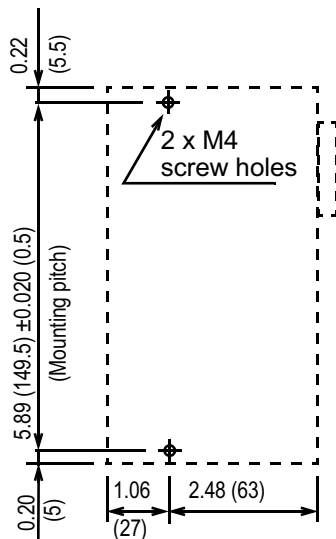
Approximate mass: 2.43lb (1.1kg)

100/200V Sigma II Servo Systems

- **SGDH-05AE to 10AE (200V Three-phase, 0.5 to 1.0kW)**
- **SGDH-08AE-S (200V* Single-phase, 750W)**



Mounting Hole Diagram



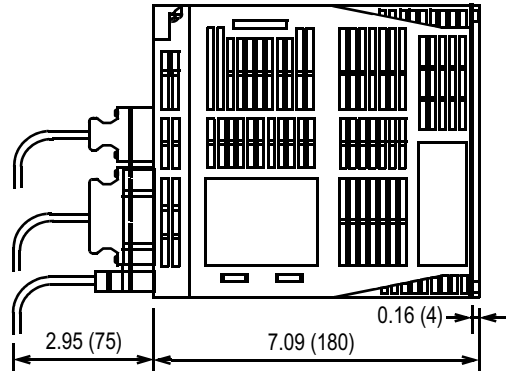
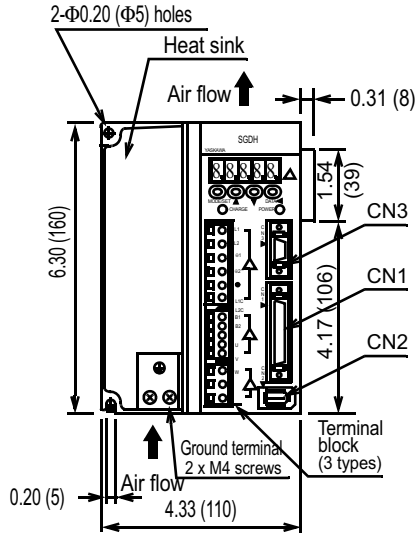
Approximate mass: 3.75lb (1.7kg)

Mating connectors: [See page 99](#)

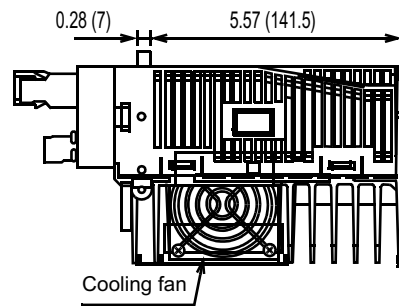
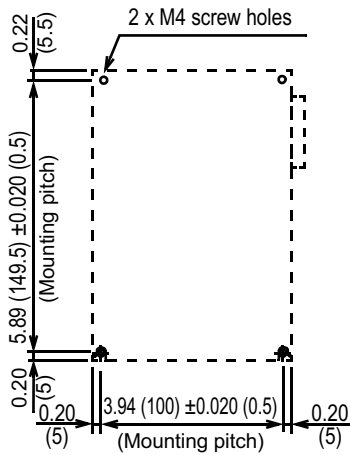
* Rating 200 to 230V_{ac} +10% -5%

100/200V Sigma II Servo System

- SGDH-15AE (200V Three-phase, 1.5kW)



Mounting Hole Diagram

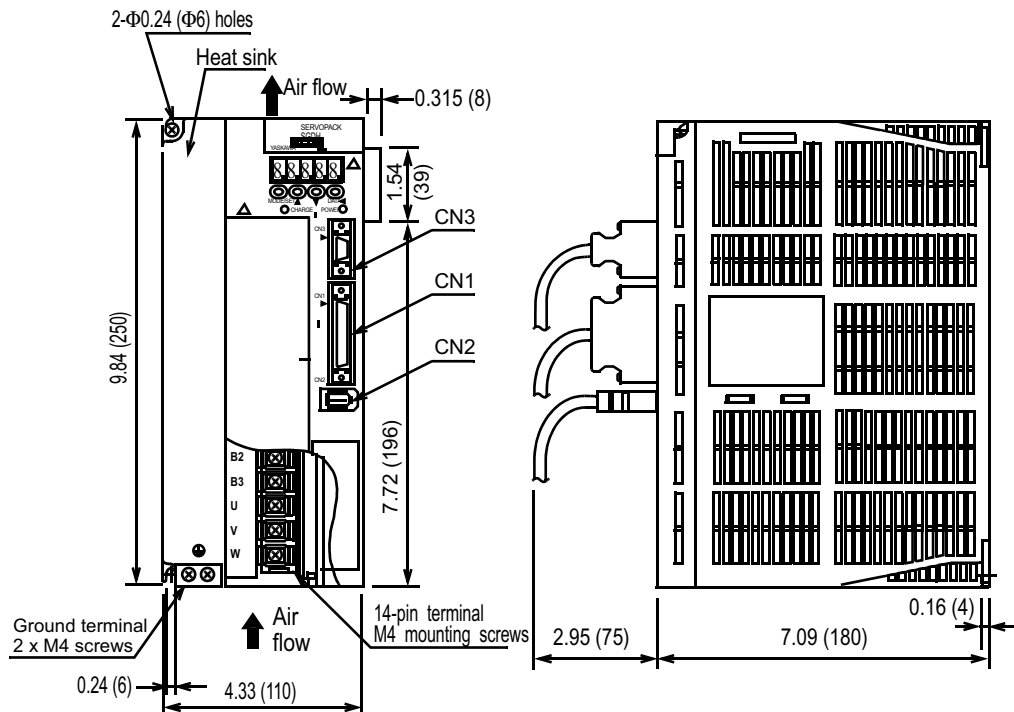


Approximate mass: 6.17lb (2.8kg)

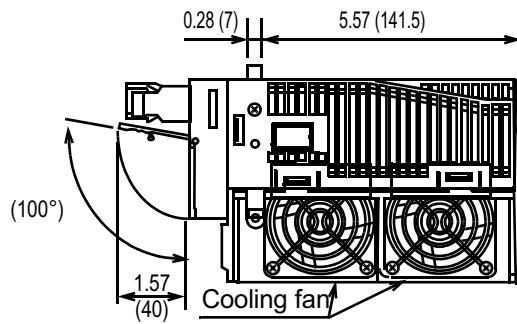
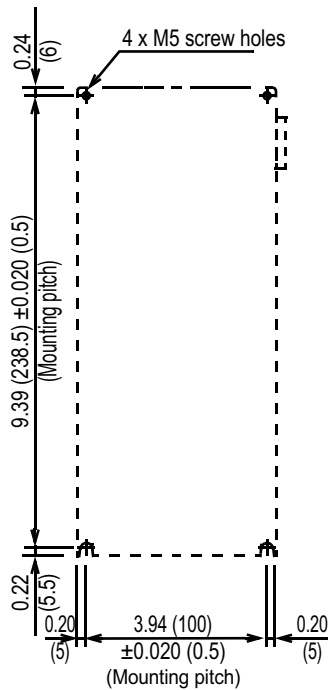
Mating connectors: [See page 99](#)

100/200V Sigma II Servo Systems

- **SGDH-20AE, 30AE (200V Three-phase, 2.0kW, 3.0kW)**
- **SGDH-15AE-S (200V Single-phase, 1.5 kW)***



Mounting Hole Diagram



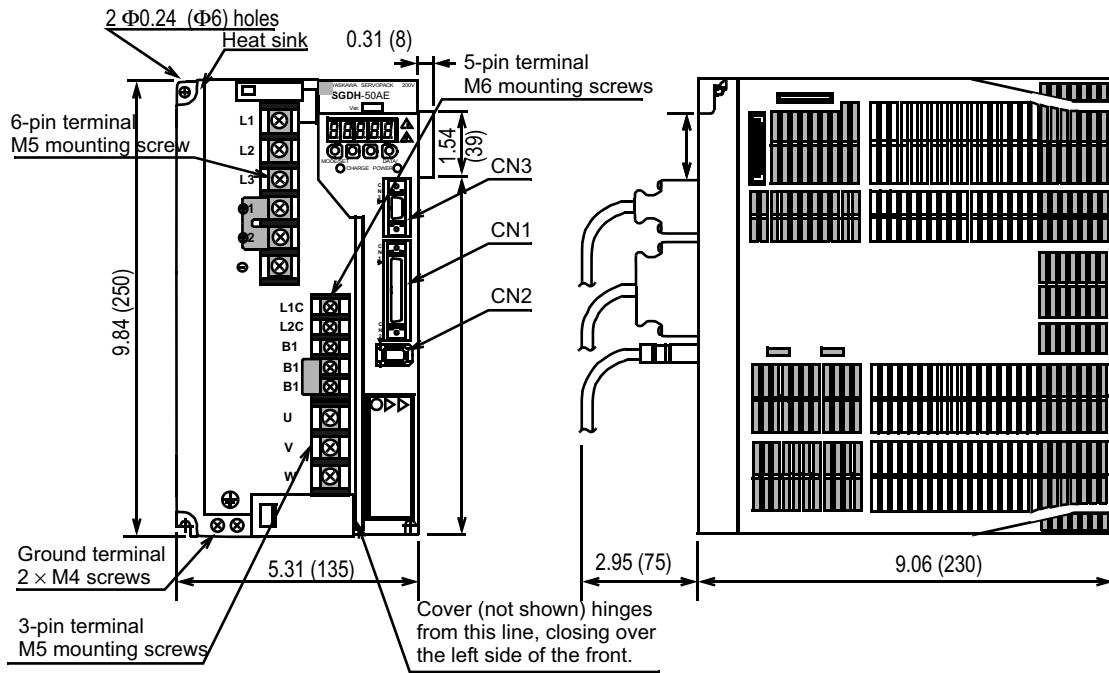
Approximate mass: 8.38lb (3.8kg)

Mating connectors: [See page 99](#)

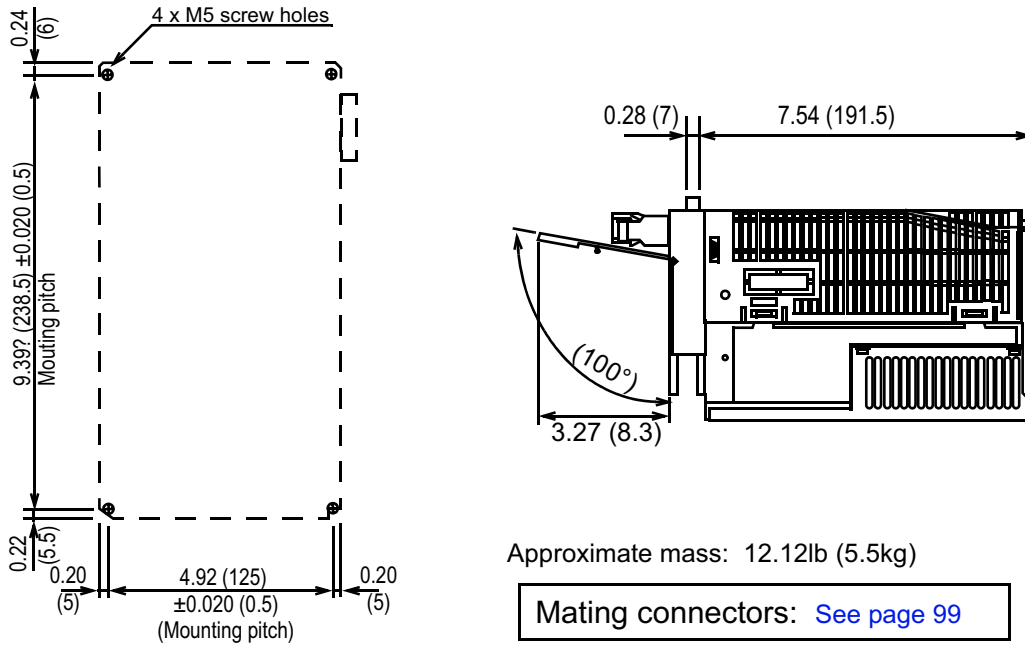
* Rating: 200 to 230V_{ac} +10%, -5%

100/200V Sigma II Servo System

- SGDH-50AE (200V Three-phase, 5.0kW)



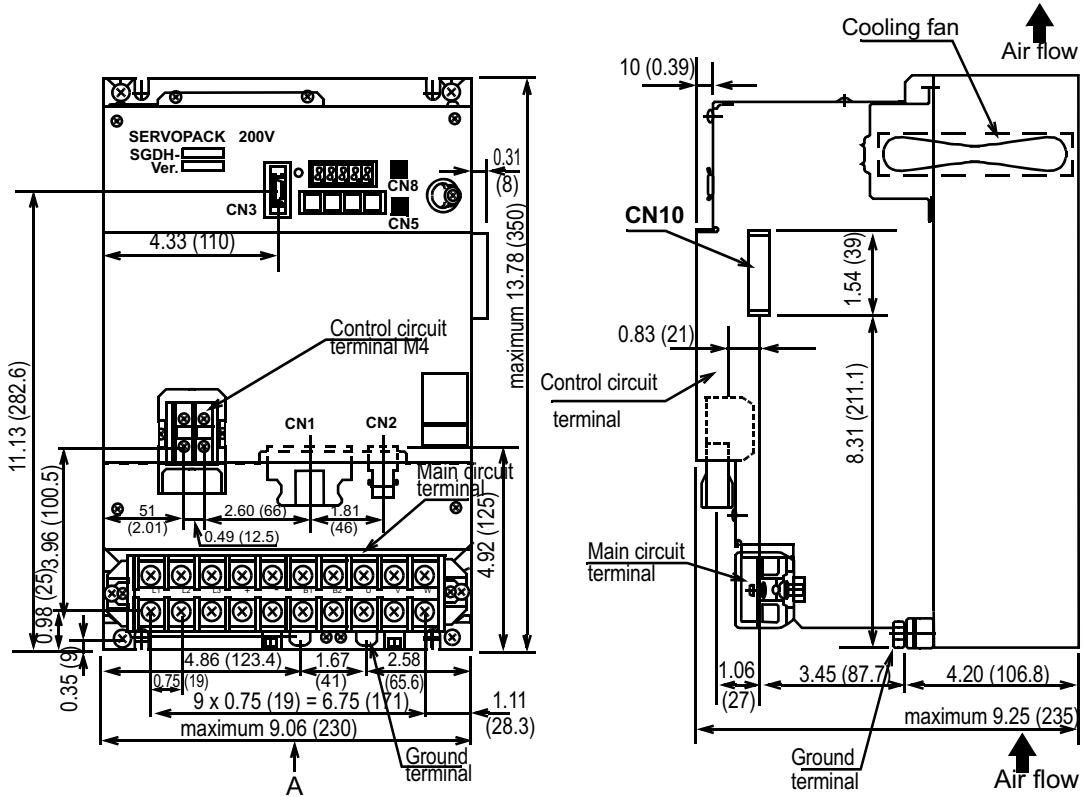
Mounting Hole Diagram



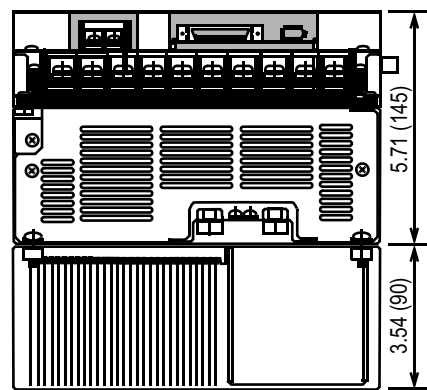
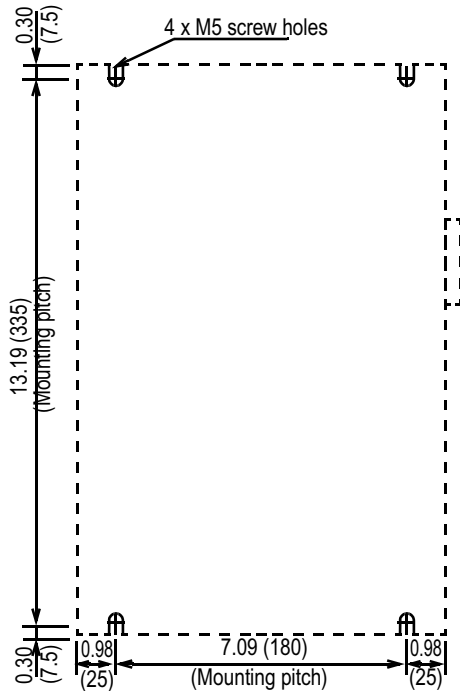
Approximate mass: 12.12lb (5.5kg)

Mating connectors: [See page 99](#)

- SGDH-60AE, SGDH-75AE (200V Three-phase, 6.0kW, 7.5kW)



Mounting Hole Diagram



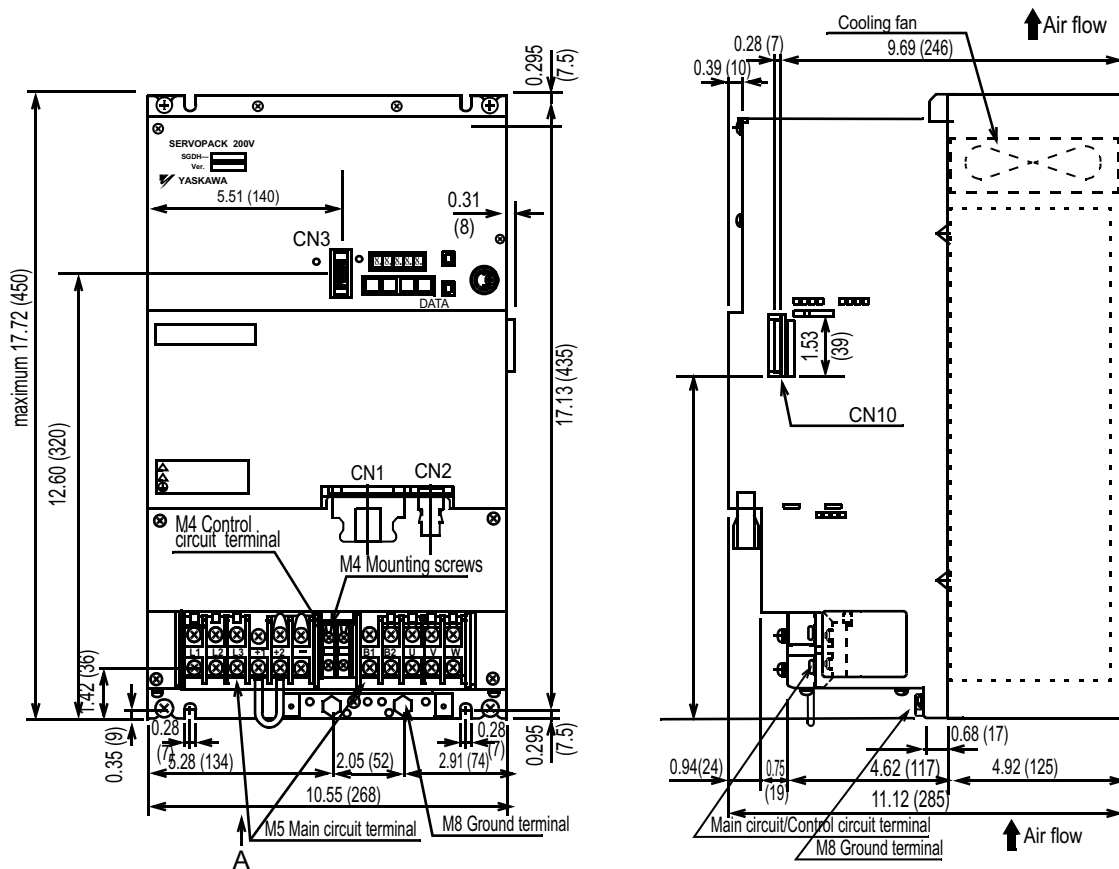
View A

Approximate Mass: 31.5lb (14.3kg)

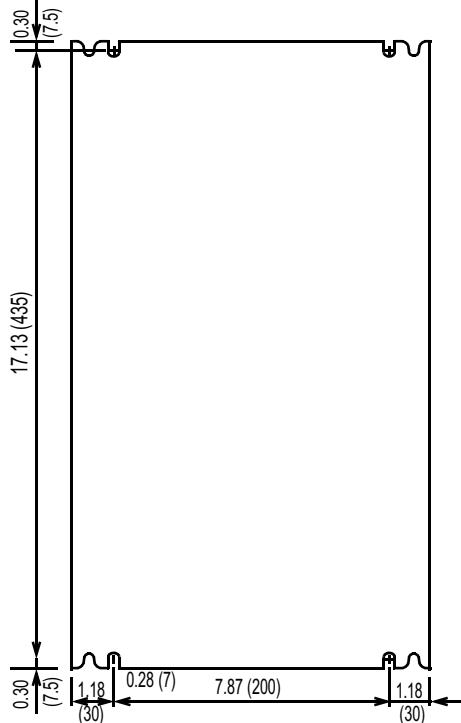
Mating connectors: [See page 99](#)

100/200V Sigma II Servo System

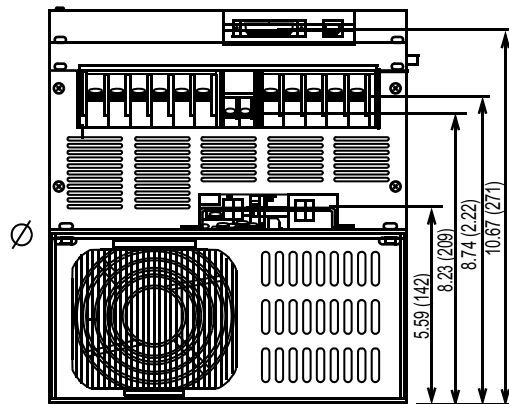
- SGDH-1AAE, SGDH-1EAE (200V Three-phase, 11.0kW, 15.0kW)



Mounting Hole Diagram



View A:



Approximate mass: 31.53lb (14.3kg)

Mating connectors: [See page 99](#)