

Torq-Tender®

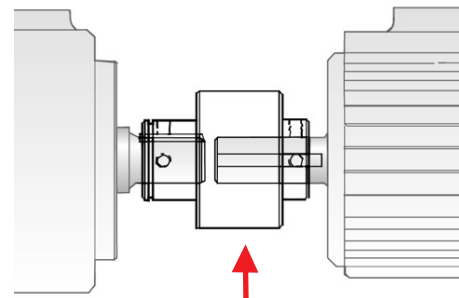
TT1X, TT2, TT2X, TT3, TT3TAN, TT3X, TT4X

Torq-Tender Installation Guide

Configurations C, CP, CD Shaft-to-Shaft Coupling



1. Align the shafts and shim components as needed to bring into alignment. Shafts should be aligned to within 0.010" parallel, 1.0° angular, and axial shaft separation to match the shaft engagements shown in the catalog.
2. Examine shaft and clean as necessary. Shaft surface should be clean and free of corrosion.
3. Mark the aligned location and remove either the driver or driven component to allow the Torq-Tender to be slid onto the shaft, with a shaft key in place.
4. Reinstall the driver or driven component that was removed to the aligned location, installing the shaft into the bore of the Torq-Tender, with a shaft key in place.
5. Shafts should protrude into the bore of the Torq-Tender at a minimum 1/2 the bore depth listed in the catalog and maximum to that bore depth.
6. Confirm alignment of the connected shafts by rotating and moving the coupling axially. If the Torq-Tender does not move freely, the shaft alignment needs to be redone (repeat step 1).
7. Tighten setscrews to secure the Torq-Tender to the shafts.



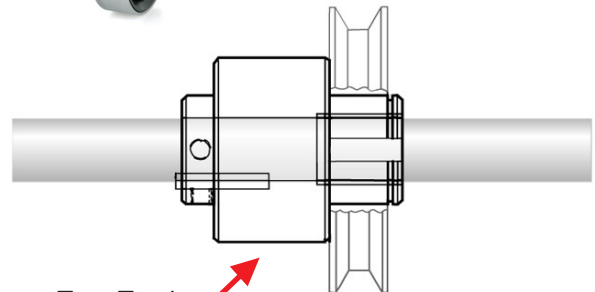
Torq-Tender

Note: Either end can be the driver or driven end for C and CD models. For CP model, the housing (F bore) end must be connected to the driver so pin will rotate in fault condition.

Configurations B, BP, BD Through-Shaft Mount



1. Check that the free length of the shaft is greater than the length of the Torq-Tender.
2. Examine shaft and clean as necessary. Shaft surface should be clean and free of corrosion.
3. Install the Torq-Tender onto the shaft with a shaft key in place.
4. Shaft should protrude through the full length of the Torq-Tender.
5. Tighten setscrew(s) to secure the Torq-Tender to the shaft.
6. Remove retaining ring at the bushed end of the Torq-Tender. Install customer-supplied sprocket, sheave, or other component overtop the external keyway, with a key in place.
7. Secure sprocket, sheave, etc. with setscrew(s) and also reinstall the retaining ring at the end of the Torq-Tender for additional means of retention.

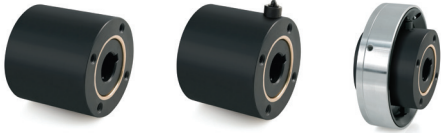


Torq-Tender

Note: Either end can be the driver or driven end for B and BD models. For BP model, pulley must be driver so pin will rotate in fault condition.

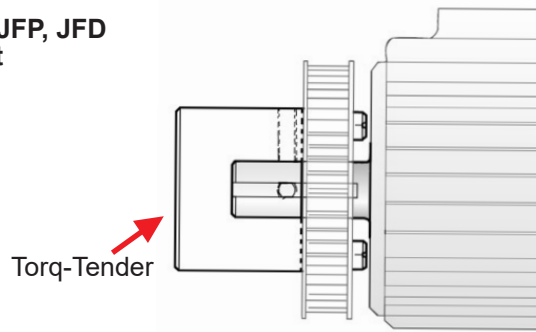
Torq-Tender®

TT1X, TT2, TT2X, TT3, TT3TAN, TT3X, TT4X



Configurations JF, JFP, JFD End-of-Shaft Mount

1. Install customer-supplied Type A plate sprocket, pulley, or other component to the bolt pattern on the face of the Torque-Tender using customer-supplied screws.
2. Examine shaft and clean as necessary. Shaft surface should be clean and free of corrosion.
3. Install the Torq-Tender assembly onto the shaft with a shaft key in place.
4. Shaft should protrude into the bore of the Torq-Tender at a minimum 1/2 the bore depth listed in the catalog and maximum to the bottom of the blind-end bore.
5. Tighten setscrew(s) to secure the Torq-Tender to the shaft.

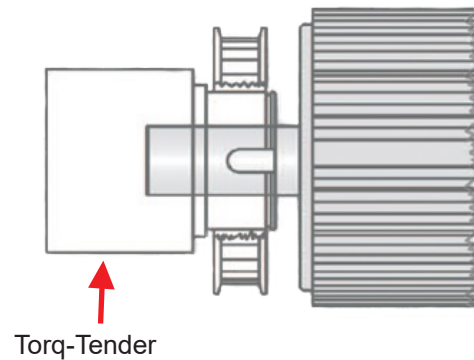


Note: Either end can be the driver or driven end for JF and JFD models. For JFP model, pulley must be driver so pin will rotate in fault condition.



Configurations J, JP, JD End-of Shaft Mount

1. Remove retaining ring at the end of the Torq-Tender. Install customer-supplied sprocket, sheave, or other component overtop the external keyway, with a key in place.
2. Secure sprocket, sheave, etc. with setscrew(s) and also reinstall the retaining ring at the end of the Torq-Tender for additional means of retention.
3. Examine shaft and clean as necessary. Shaft surface should be clean and free of corrosion.
4. Install the Torq-Tender assembly onto the shaft with a shaft key in place.
5. Shaft should protrude into the bore of the Torq-Tender at a minimum past the location of the setscrew(s) and maximum to the bottom of the blind-end bore.
6. Tighten setscrew(s) to secure the Torq-Tender to the shaft.

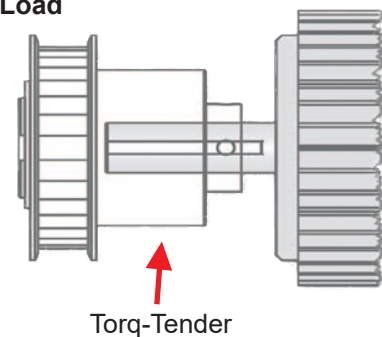


Note: Either end can be the driver or driven end for J and JD models. For JP model, pulley must be driver so pin will rotate in fault condition.



Configurations S, SP, SD End-of-Shaft Mount, Outboard Load

1. Remove retaining ring at the end of the Torq-Tender. Install customer-supplied sprocket, sheave, or other component overtop the external keyway with a key in place.
2. Secure sprocket, sheave, etc. with setscrew(s) and also reinstall the retaining ring at the end of the Torq-Tender for additional means of retention.
3. Examine shaft and clean as necessary. Shaft surface should be clean and free of corrosion.
4. Install the Torq-Tender assembly onto the shaft with a shaft key in place.
5. Shaft should protrude into the bore of the Torq-Tender at a minimum 1/2 the bore length listed in the catalog and maximum to the bottom of the blind-end bore.
6. Tighten setscrew(s) to secure the Torq-Tender to the shaft.



Note: Either end can be the driver or driven end for S and SD models. For SP model, pulley must be driver so pin will rotate in fault condition.

ZERO-MAX®